

THE VINOY

AT PARK WEST

DEVELOPED BY PARKWEST PARTNERS, LLC
MT. PLEASANT, SOUTH CAROLINA

| | |
|----------|-----------|
| PROJECT | 2003-0711 |
| DATE | 1-25-04 |
| DRAWN BY | MK |
| DATE | 8/17/04 |

DIRECTORY

OWNER
PARKWEST PARTNERS LLC
1156 BOWMAN RD.
SUITE 100-B
MOUNT PLEASANT, SC 29464
(O): 843-352-1445

ARCHITECT
MARTIN RILEY ASSOCIATES - ARCHITECTS, P.C.
215 CHURCH STREET, SUITE 200 DECATUR,
GEORGIA 30030-3329
(O): 404-373-2800 EXT. 206

CONTRACTOR
BOSTIC BROTHERS CONSTRUCTION
P.O. BOX 7939
GREENSBORO, NORTH CAROLINA
27417-7939

24 HOUR CONTACT
TONY BELL
(843) 241-3859

CIVIL ENGINEER
SCE
668 MARINA DRIVE
SUITE B-1
CHARLESTON, SC 29492
(843) 849-8945

ENGINEER
PHILLIPS ENGINEERING
500 SUGAR MILL RD
BUILDING A, SUITE 105
ATLANTA, GA 30350
(770) 650-9061

STRUCTURAL ENGINEER
JACK WEEMS
3104 Mercer University Drive
Suite 100
Atlanta, GA 30341-4143
(770) 457-0065

PROJECT INFORMATION

DESCRIPTION
-TOTAL SITE AREA: 17.8 ACRES
-RESIDENTIAL APARTMENTS
-TYPE V₆ PROTECTED GROUP R2 PER 2000 IBC, ± THREE STORY
RESIDENTIAL APARTMENT BUILDINGS 100-300
-TYPE V₀ UNPROTECTED GROUP AND TYPE V PER 2000 IBC, BUILDINGS
1000-1500
-TYPE V₀ UNPROTECTED GROUP B PER 2000 IBC, ONE STORY
CLUBHOUSE

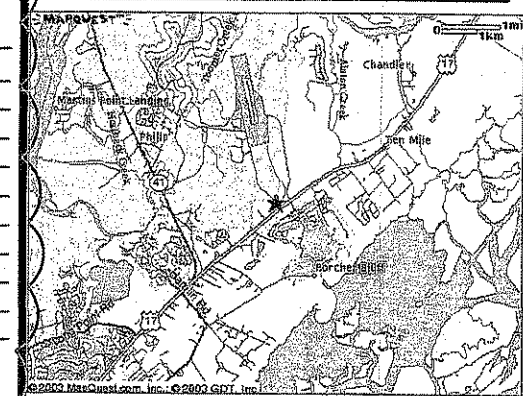
CODES
-2000 INTERNATIONAL BUILDING CODE
-2000 INTERNATIONAL PLUMBING CODE
-2000 INTERNATIONAL MECHANICAL CODE
-2000 INTERNATIONAL FIRE PREVENTION CODE
-1995 NATIONAL ELECTRIC CODE
-LOCAL ZONING ORDINANCE

NOTES
-BUILDINGS 100-1100 ARE TO HAVE A SUPERVISED NFPA 13R
SPRINKLER SYSTEM
-SPRINKLER PLANS TO BE SUBMITTED BY SUBCONTRACTOR

UNIT SCHEDULE

| UNIT TYPE | UNIT AREA |
|----------------------------|--------------|
| A1 1BR/1BA | 844 SQ. FT. |
| A2 1BR/1BA | 662 SQ. FT. |
| AH1 1BR/1BA H/C ACCESSIBLE | 844 SQ. FT. |
| B1 2BR/2BA | 982 SQ. FT. |
| B2 2BR/2BA (DOUBLE MASTER) | 1101 SQ. FT. |
| B3 2BR/2BA (DOUBLE MASTER) | 1101 SQ. FT. |
| B4 2BR/2BA (DOUBLE MASTER) | 1063 SQ. FT. |
| BH1 2BR/2BA H/C ACCESSIBLE | 982 SQ. FT. |
| C 3BR/2BA | 1274 SQ. FT. |
| CH 3BR/2BA H/C ACCESSIBLE | 1274 SQ. FT. |

VICINITY MAP

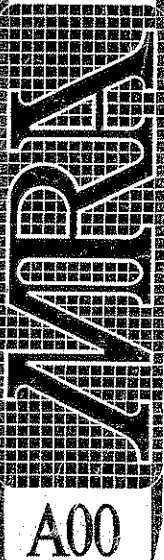


BUILDING SCHEDULE

| BUILDING | A1 | A2 | AH-1 | B1 | B2 | B3 | B4 | BH-1 | C | CH-1 | UNITS | PROTEC. CONCRETE | BUILDING FOOTPRINT | MAN LEV. HD. AREA | HTD. BLDG GROSS SF. | GARAGE UNITS | GARAGE FOOTPRINT | # OF STORES |
|----------------|-----------|----------|----------|-----------|-----------|-----------|-----------|----------|-----------|----------|------------------|------------------|--------------------|-------------------|---------------------|--------------|-------------------|-------------|
| BUILDING #100 | - | - | - | 6 | 6 | 6 | - | 5 | 1 | 1 | 24 UNITS | YES | 12,060 SF. | 9,115.5 SF. | 27,348 SF. | | | 3 |
| BUILDING #200 | - | - | - | 6 | 6 | 6 | - | 5 | 1 | 1 | 24 UNITS | YES | 12,060 SF. | 9,115.5 SF. | 27,348 SF. | | | 3 |
| BUILDING #300 | - | - | - | 6 | 6 | 6 | - | 5 | 1 | 1 | 24 UNITS | YES | 12,060 SF. | 9,115.5 SF. | 27,348 SF. | | | 3 |
| BUILDING #400 | - | - | - | 6 | 6 | 6 | - | 5 | 1 | 1 | 24 UNITS | YES | 12,060 SF. | 9,115.5 SF. | 27,348 SF. | | | 3 |
| BUILDING #500 | 6 | - | - | 4 | - | - | 6 | 2 | 6 | - | 24 UNITS | YES | 11,034 SF. | 8,347 SF. | 25,041 SF. | | | 3 |
| BUILDING #600 | 6 | - | - | 4 | - | - | 6 | 2 | 6 | - | 24 UNITS | YES | 11,034 SF. | 8,347 SF. | 25,041 SF. | | | 3 |
| BUILDING #700 | 6 | - | - | 4 | - | - | 6 | 2 | 6 | - | 24 UNITS | YES | 11,034 SF. | 8,347 SF. | 25,041 SF. | | | 3 |
| BUILDING #800 | - | - | - | 6 | 6 | 6 | - | 6 | - | - | 24 UNITS | YES | 12,060 SF. | 9,115.5 SF. | 27,348 SF. | | | 3 |
| BUILDING #900 | 4 | - | 2 | - | - | - | 6 | - | 12 | - | 24 UNITS | YES | 11,658 SF. | 8,978 SF. | 26,784 SF. | | | 3 |
| BUILDING #1000 | - | 4 | - | - | - | - | - | - | - | - | 4 UNITS | YES | 2,790 SF. | 2,648 SF. | 2,648 SF. | 8 | 2,790 SF. | 2 |
| BUILDING #1100 | - | 4 | - | - | - | - | - | - | - | - | 4 UNITS | YES | 2,790 SF. | 2,648 SF. | 2,648 SF. | 8 | 2,790 SF. | 2 |
| BUILDING #1200 | - | - | - | - | - | - | - | - | - | - | - | NO | - | - | - | 1 | 1945 SF. | 1 |
| BUILDING #1300 | - | - | - | - | - | - | - | - | - | - | - | NO | - | - | - | 12 | 3316 SF. | 1 |
| BUILDING #1400 | - | - | - | - | - | - | - | - | - | - | - | NO | - | - | - | 12 | 3316 SF. | 1 |
| BUILDING #1500 | - | - | - | - | - | - | - | - | - | - | - | NO | - | - | - | 12 | 3316 SF. | 1 |
| BUILDING #1600 | - | - | - | - | - | - | - | - | - | - | - | NO | - | - | - | 12 | 3316 SF. | 1 |
| TOTALS: | 22 | 8 | 2 | 12 | 30 | 30 | 54 | 6 | 56 | 4 | 224 UNITS | | 110,640 SF. | 84,845 SF. | 243,843 SF. | 66 | 19,418 SF. | |

CLUBHOUSE TO BE SUBMITTED UNDER SEPARATE PERMIT PACKAGE
NOTE: BUILDING #1000, #1100 ARE STUDIO UNITS OVER GARAGES

MARTIN RILEY ASSOCIATES - ARCHITECTS, P.C.
215 CHURCH STREET SUITE 200 DECATUR GEORGIA 30030-3329 / 404-373-2800
THE VINOY AT PARK WEST
MT. PLEASANT, SOUTH CAROLINA

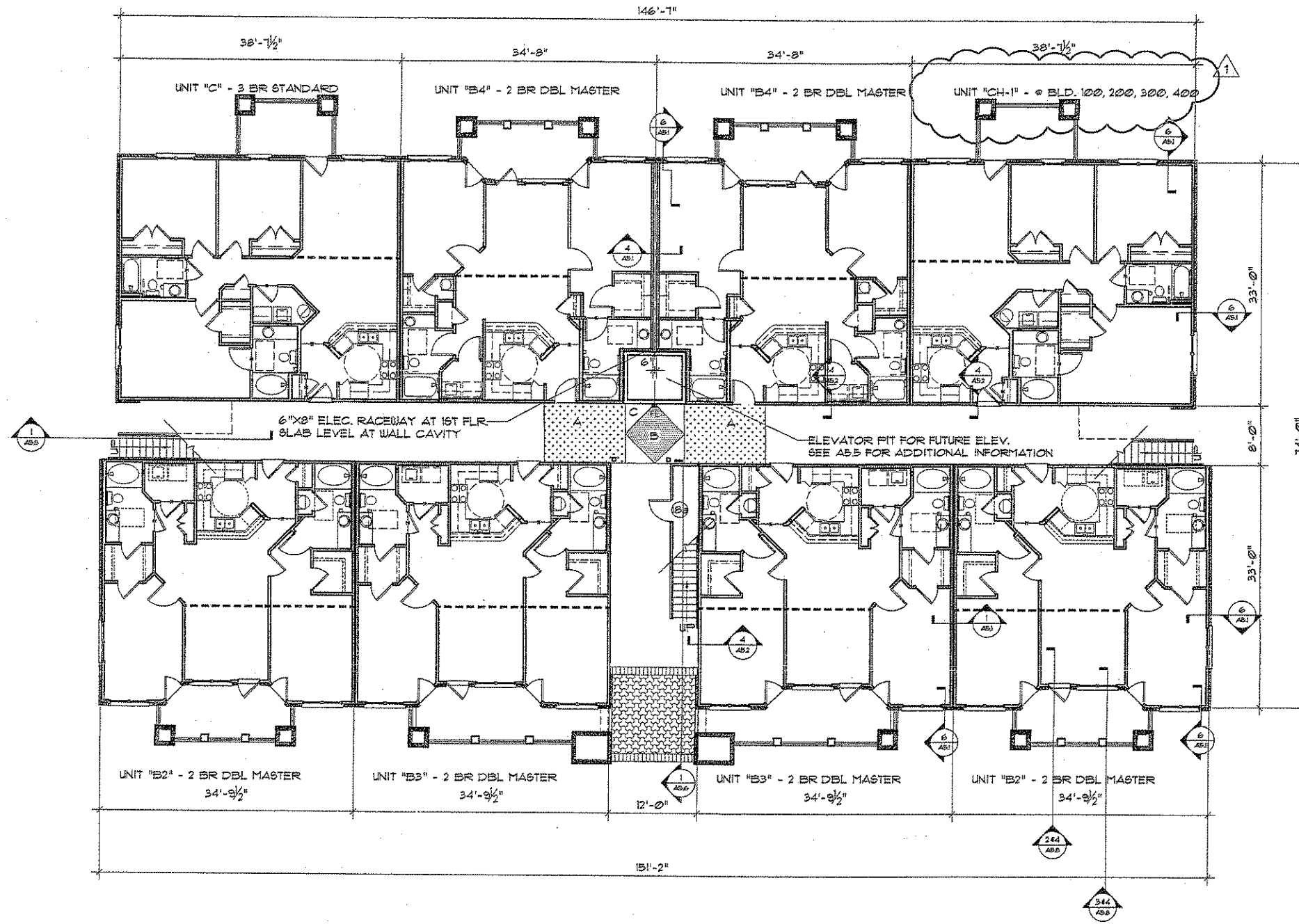


BOWEN-BATTERY BUILDINGS

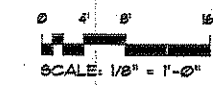
PLOTTED: Sep 27, 2004 - 1005en LOCATION: P:\Vrem\2003-077_Mt. PLEASANT\ 2003-077_000.dwg Plotted By: Nelson - Copyright 2004

COVER SHEET

PLOTTED: Sep 27, 2004 - 10:46am LOCATION: P:\Vrem\2003-077_Mt. Pleasant\2003-077_Mt. Pleasant\2003-077_A21.dwg Plotted By: mwen - Copyright 2004



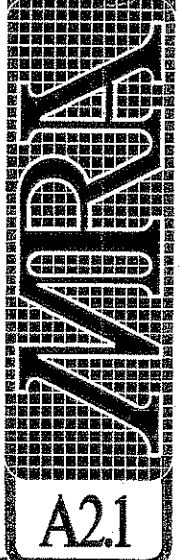
1 FIRST FLOOR PLAN BUILDINGS 100, 200, 300, 400, 500
1/8" = 1'-0"



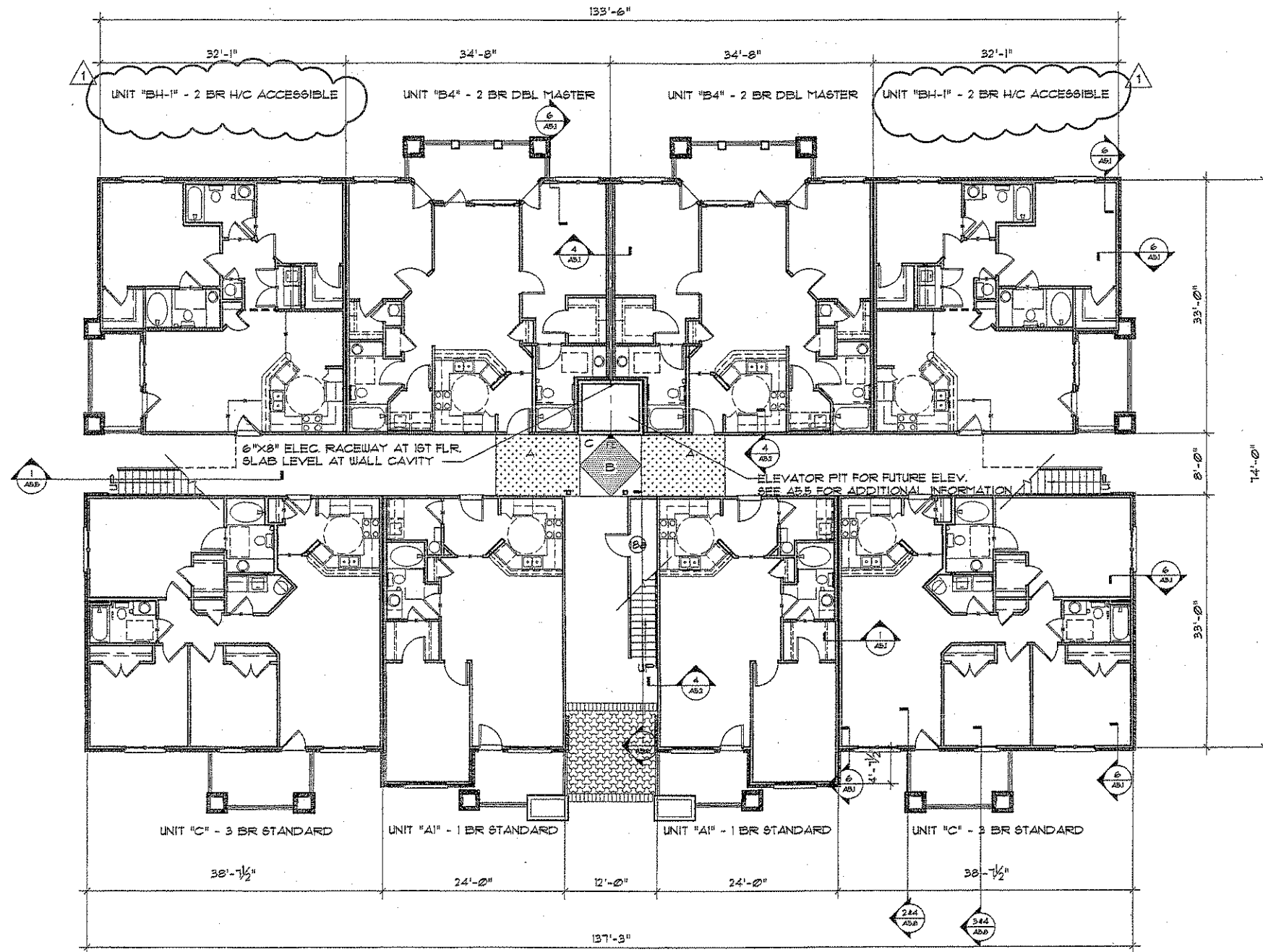
BATTERY

| | |
|-------------|----------|
| DATE | 02/17/04 |
| BY | 02/17/04 |
| PROJECT | 2003-077 |
| DATE | 12/16/03 |
| DESIGNED BY | MCK/EAR |

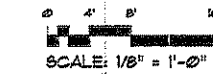
MARTIN RILEY ASSOCIATES - ARCHITECTS, P.C.
215 CHURCH STREET SUITE 200 DECATUR GEORGIA 30030-3329 404-373-2800
THE VINOY AT PARK WEST
MT. PLEASANT, SC.
FIRST FLOOR PLAN BUILDINGS 100, 200, 300, 400, 500



PLOTTED: Sep 24, 2004 - 10:06pm LOCATION: P:\M\m\m\2003-077_MT_PLEASANT\2003-077_A204.dwg Plotted By: nixon - Copyright 2004



1 FIRST FLOOR PLAN BUILDINGS 600, 600, 700
1/8" = 1'-0"



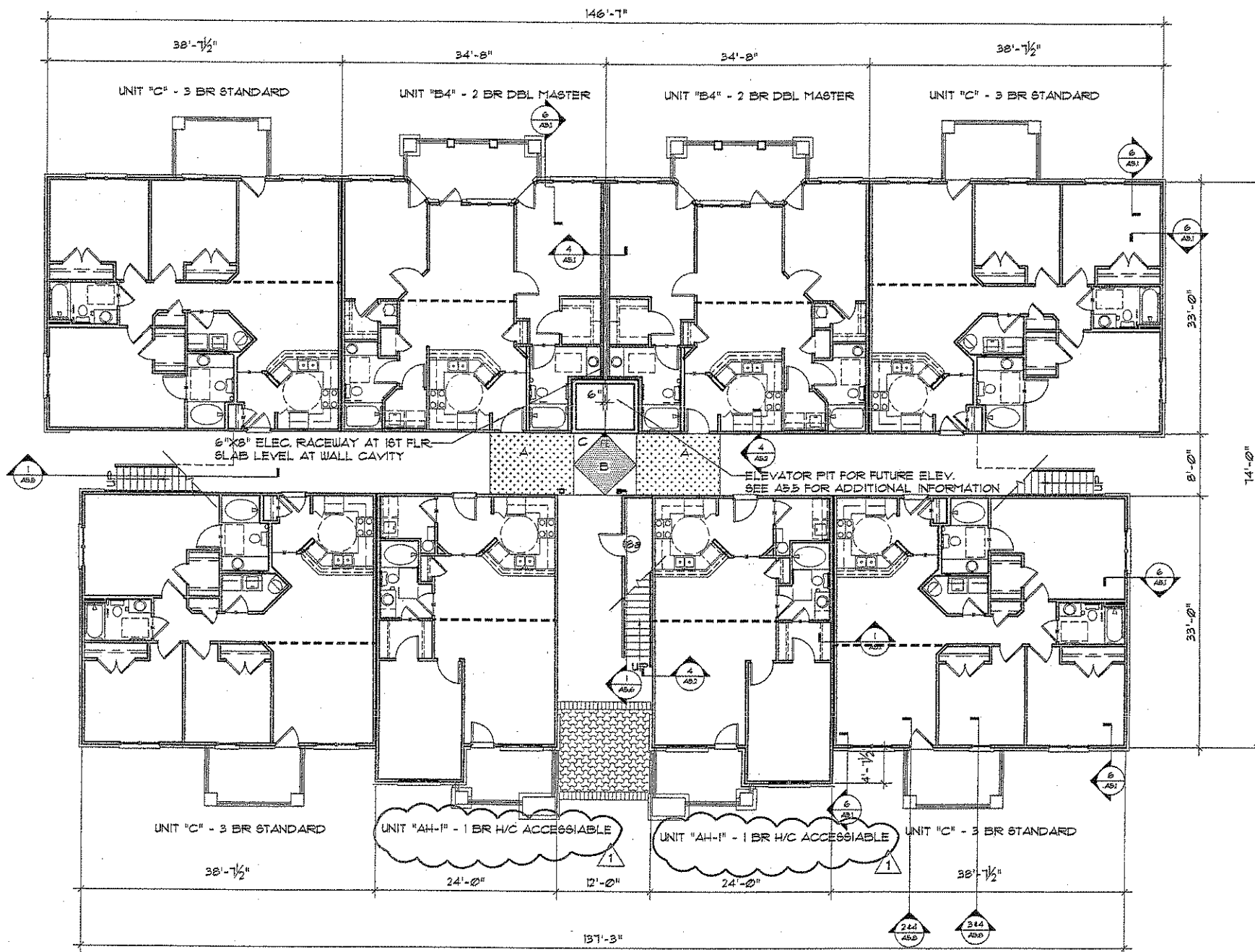
MARNA
A2.4

MARTIN RILEY ASSOCIATES - ARCHITECTS, P.C.
215 CHURCH STREET SUITE 200 DECATUR GEORGIA 30030-3329 404-373-2800
THE VINOY AT PARK WEST
MT. PLEASANT, SC
FIRST FLOOR PLAN BUILDINGS 500, 600, 600, 700

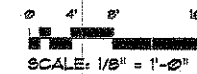
| | |
|----------|----------|
| PROJECT | 2003-077 |
| DATE | 12/16/03 |
| DRAWN BY | MCK/EAR |
| REVISION | 01/20/04 |
| | 02/17/04 |

BATTERY

PLOTTED: Sep 24, 2004 1:48pm LOCATION: P:\Vrew\2003-077.MT.PLEASANT\ 2003-077_A207.dwg Plotted By: mskwon - Copyright 2004



1 FIRST FLOOR PLAN BUILDING 900
1/8" = 1'-0"



| | |
|----------|----------|
| PROJECT | 2003-011 |
| DATE | 12/6/03 |
| DRAWN BY | MCK/BAE |
| REVISION | 8-11-04 |

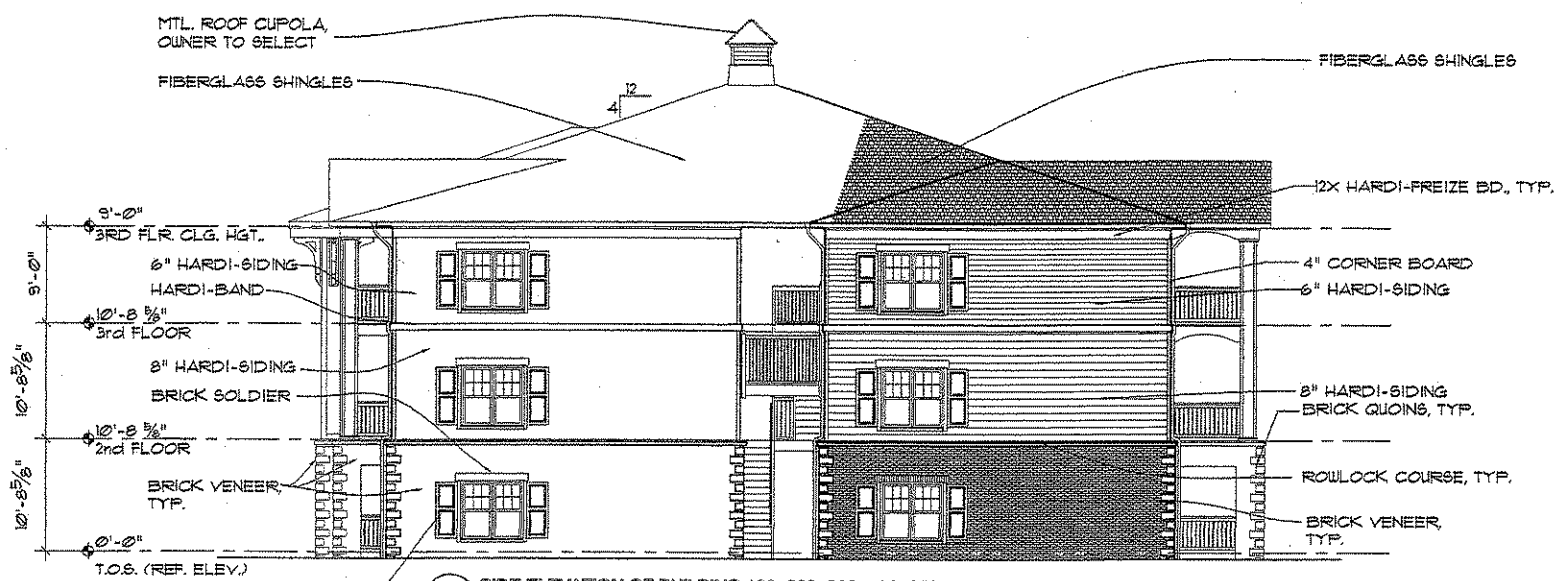
MARTIN RILEY ASSOCIATES - ARCHITECTS, P.C.
 215 CHURCH STREET SUITE 200 DECATUR GEORGIA 30030-3329 404-373-2800

THE VINOY AT PARK WEST
 MT. PLEASANT, SC

FIRST FLOOR PLAN BUILDING 900

A2.7

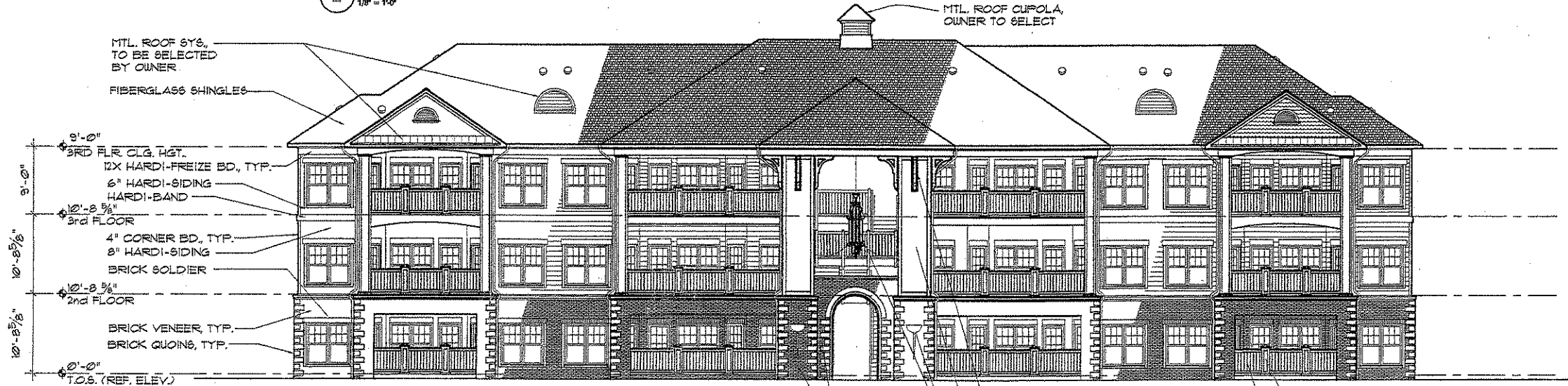
PLOTTED: Sep 24, 2004 - 117pm LOCATION: P:\Vermont\2003-077_Mt. Pleasant\2003-077_A302.dwg Plotted By: mskwn - Copyright 2004



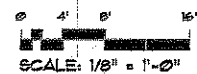
3 SIDE ELEVATION OF BUILDING 100, 200, 300, 400, 500
1/8" = 1'-0"



2 REAR ELEVATION OF BUILDING 100, 200, 300, 400, 500
1/8" = 1'-0"



1 FRONT ELEVATION OF BUILDING 100, 200, 300, 400, 500
1/8" = 1'-0"



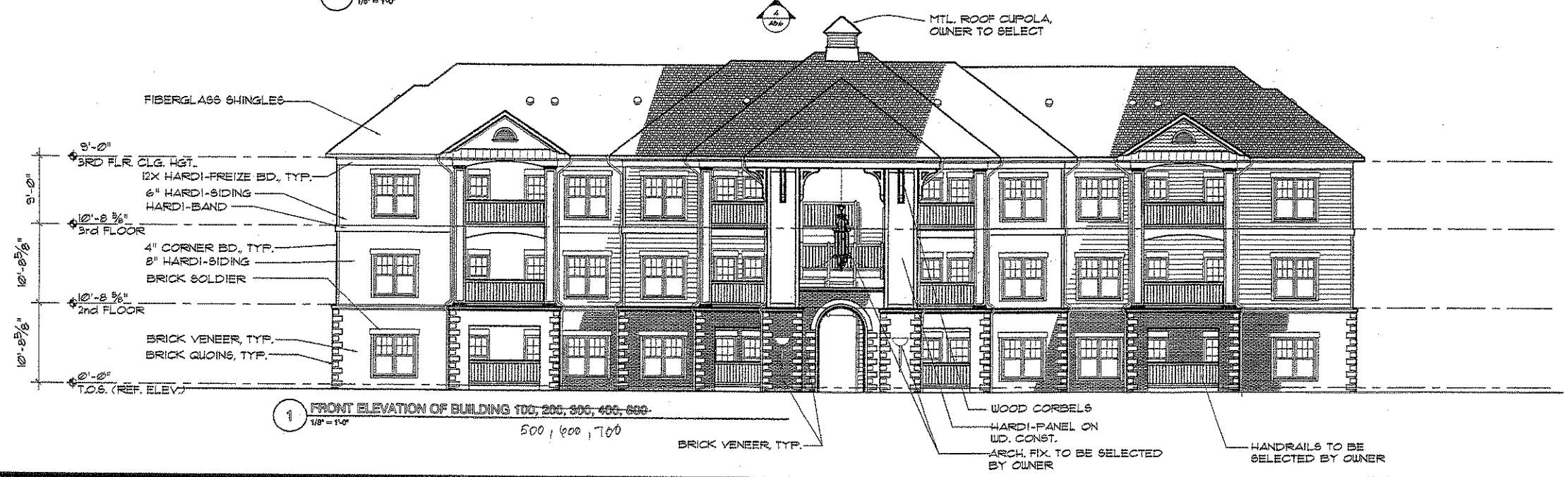
| | |
|-------------|----------|
| PROJECT | 2003-077 |
| DATE | 12-11-03 |
| DESIGNED BY | MCK |

MARTIN RILEY ASSOCIATES - ARCHITECTS, P.C.
25 CHURCH STREET SUITE 200 DECATUR GEORGIA 30030-3329 404-373-2800
THE VINOY AT PARK WEST
MT. PLEASANT, SC
ELEVATION BUILDINGS 100, 200, 300, 400, 500

MAR
A3.2

BATTERY

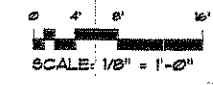
PLOTTED: Sep 24, 2004 11:28pm LOCATION: P:\M\m\2003-077_MT_PLEASANT\2003-077_MT_PLEASANT.dwg Plotted By: mewan - Copyright 2004



| | |
|----------|----------|
| PROJECT | 2003-077 |
| DATE | 12/18/03 |
| DRAWN BY | RF-G |

MARTIN RILEY ASSOCIATES - ARCHITECTS, P.C.
 25 CHURCH STREET SUITE 200 DECATUR GEORGIA 30030-3329 404-373-2800
 THE VINOY AT PARK WEST
 MT. PLEASANT, SC
 BUILDING 500, 600, 1000 ELEVATIONS

MIRA
 A3.3



BATTERY

